

55 Thayer Street  
Boston, MA 02118  
617.728.0770

[home and current show](#) | [upcoming exhibition](#) | [past exhibitions](#) | [artists](#) | [contact us](#) | [about us](#) | [directions](#) | [BACK](#)

current exhibition

## Christopher Chippendale

New Work

Artist's Reception is Friday, November 6, 5:30 PM to 7:30 PM

Exhibition dates: November 6 - December 19

Artist Gallery Talk on Saturday, Dec. 5 @ 3:00 PM

[Download Artist Statement](#)

[Download Press Release](#)

[click image to view larger](#)





*Apple Tree*  
oil on linen  
18" x 14", 2015



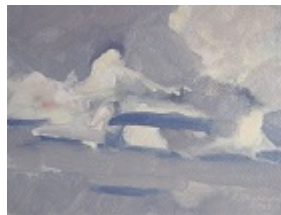
*Around 5:30,  
Maple Tree*  
oil on canvas on board  
27.25" x 16.75", 2015



*Mt. Desert Narrows*  
oil on linen  
18" x 14", 2015



*Cloud Study 1*  
oil on paper on panel  
7" x 9.25", 2015



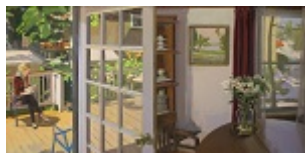
*Cloud Study 2*  
oil on paper on panel  
7" x 9.25", 2015



*Dunham Point, Deer Isle*  
oil on canvas  
14" x 18", 2014



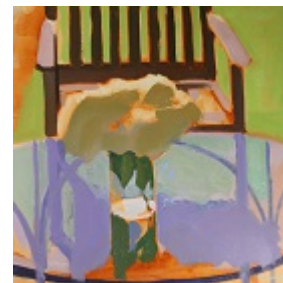
*Dusk, Burnt Cove*  
oil on canvas  
11" x 15", 2015



*Moment and Duration*  
oil on canvas  
30" x 60", 2015



*Evening, Pickering Cove*  
oil on canvas  
11" x 14", 2014



*Glass Table with Objects*  
oil on panel  
22" x 22", 2014



*Green Head*  
oil on panel  
15" x 22", 2015



*Revere Beach*  
oil on panel  
8.5" x 18", 2015



*Sand Beach*  
oil on canvas  
7.75" x 8.75", 2015



*Sunset, Burnt Cove*  
oil on canvas  
10" x 14", 2014



*Sunset, Burnt Cove 2*  
oil on canvas  
14" x 18", 2015



*Copley Square, Early Morning*  
oil on canvas  
38" x 31", 2015



*Eggemoggin Reach*  
oil on paper on panel  
10" x 14.5", 2015



*The Fields*  
oil on paper on panel  
11" x 15", 2015



*Burnt Cove*  
oil on panel  
13" x 11", 2014



[\\*Click HERE to receive future exhibit information](#)

Privacy by SafeSubscribe<sup>SM</sup>

Soprafina Gallery | 55 Thayer Street | Boston, MA 02118 | 617.728.0770 | [info@soprafina.com](mailto:info@soprafina.com)