

55 Thayer Street  
Boston, MA 02118  
617.728.0770

[home and current show](#) | [upcoming exhibition](#) | [past exhibitions](#) | [artists](#) | [contact us](#) | [about us](#) | [directions](#) | [BACK](#)

current exhibition

# Michael Palmer

## New Paintings

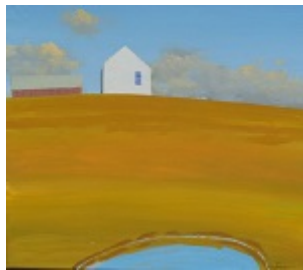
Exhibition Dates are May 1st to May 30th

Artist's Reception is Friday, May 1st, 5:30 PM to 7:30 PM

The gallery is open on May 3rd, 11:00 AM to 6:00 PM

[Download Artist CV](#)

*Click on image to view larger.*



*Farm Pond*



*Saltwater Farm Low Tide*



*Saltwater Farmscape*



*Urban Conduits*

acrylic on canvas  
20" x 20", 2015



*View from the Top*  
acrylic on canvas  
16" x 16", 2015

acrylic on canvas  
30" x 30", 2015



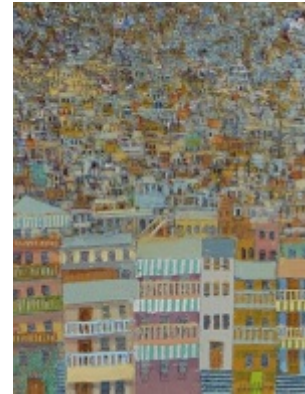
*Yellow House*  
acrylic on canvas  
30" x 30", 2015

acrylic on canvas  
30" x 30", 2015

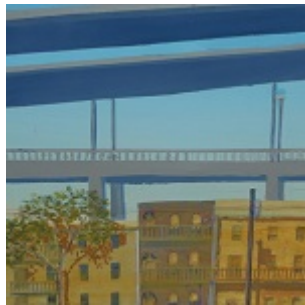


*Chaos 31*  
acrylic on canvas  
14" x 14", 2015

acrylic on canvas  
14" x 14", 2015



*Chaos 32*  
acrylic on canvas  
15" x 20", 2015



*Passovers*  
acrylic on canvas  
24" x 24", 2015



*Prelude*  
acrylic on canvas  
24" x 36", 2015



*Beached*  
acrylic on canvas  
14" x 14", 2015



*Chaos Tropic*  
acrylic on canvas  
14" x 14", 2015



[\\*Click HERE to receive future exhibit information](#)

Privacy by  SafeSubscribe<sup>SM</sup>

Soprafina Gallery | 55 Thayer Street | Boston, MA 02118 | 617.728.0770 | [info@soprafina.com](mailto:info@soprafina.com)